

Before Midnight

A little info on what you need
to know about extensions. Includes
cost and maintenance.



OUR PLAN

01 *Method*

Choosing which method of extensions is an important step in ensuring that you will love your extensions and that you get the most value out of the service.

02 *Consultation*

The Consultation and Color Matching will give you and me all the tools we need to give you a seamless and perfect blend

03 *Maintenance*

I will teach you how to care for your extensions in between visits and recommend the best products to use to keep your extensions looking amazing.

CHOOSING
THE CORRECT
LENGTH YOU
MUST KEEP IN
MIND YOUR
HEIGHT. IF
YOU ARE
TALLER YOU
MUST
ACCOMMODATE
BY GETTING
LONGER
EXTENSIONS.





METHOD

Keratin Fusion

Keratin Fusion is done with small pieces of Keratin bonded to your hair individually in very small pieces. It is the most natural and long lasting extension method there is. Last 3-6 months. No maintenance.



Itips

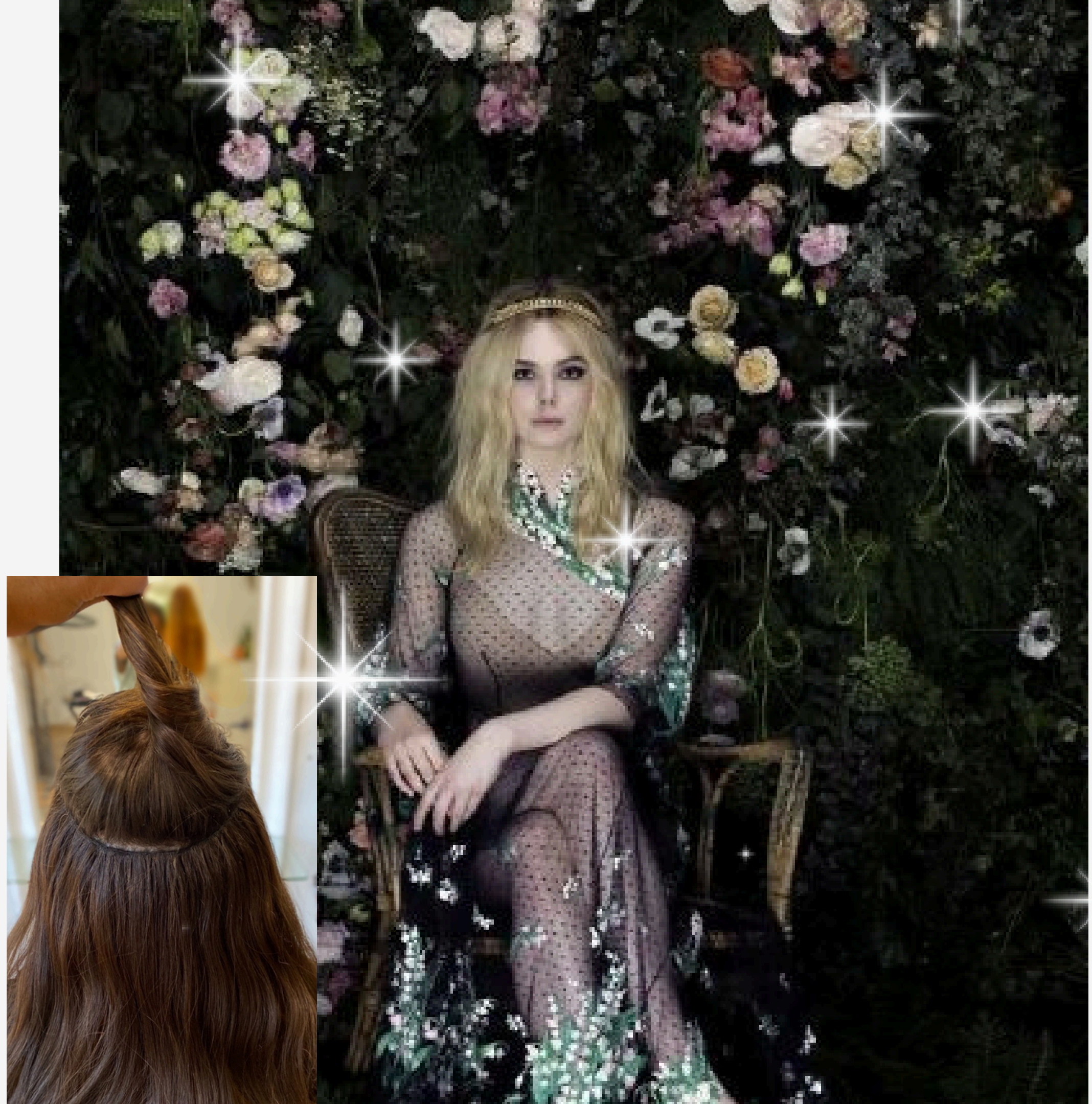
Like Keratin Bonds these are individual strands. Instead of Keratin these pieces are attached without heat. They clamp to the hair with a copper flare bead. You are able to reapply the hair 2-3 times before needing a new set. Moveups are typically 4-6 weeks of wear. Re applications are every other move up appointment.



METHOD

Hidden Beaded Rows

Hidden Beaded Rows are Hand tied weft hair that is secured to the hair with a row of Beads and stitching. HBR can offer a large amount of hair in a small amount of time. Move ups are needing every 8-10 weeks. Hair can last up to 10 months.



25 grams per pack

THIS IS WHAT 25 GRAMS OF
HAIR EXTENSIONS CAN DO



THIS IS WHAT 50 GRAMS OF
HAIR EXTENSIONS LOOKS LIKE



THIS IS WHAT 75 GRAMS OF
HAIR EXTENSIONS LOOKS LIKE



THIS IS WHAT 125 GRAMS OF
HAIR EXTENSIONS LOOKS LIKE
ON FINE HAIR



THIS IS WHAT 150 GRAMS OF
HAIR EXTENSIONS LOOKS LIKE
ON MEDUIM HAIR



THIS IS WHAT 175 GRAMS OF
HAIR EXTENSIONS LOOKS LIKE
ON CLIENTS WITH THICK HAIR

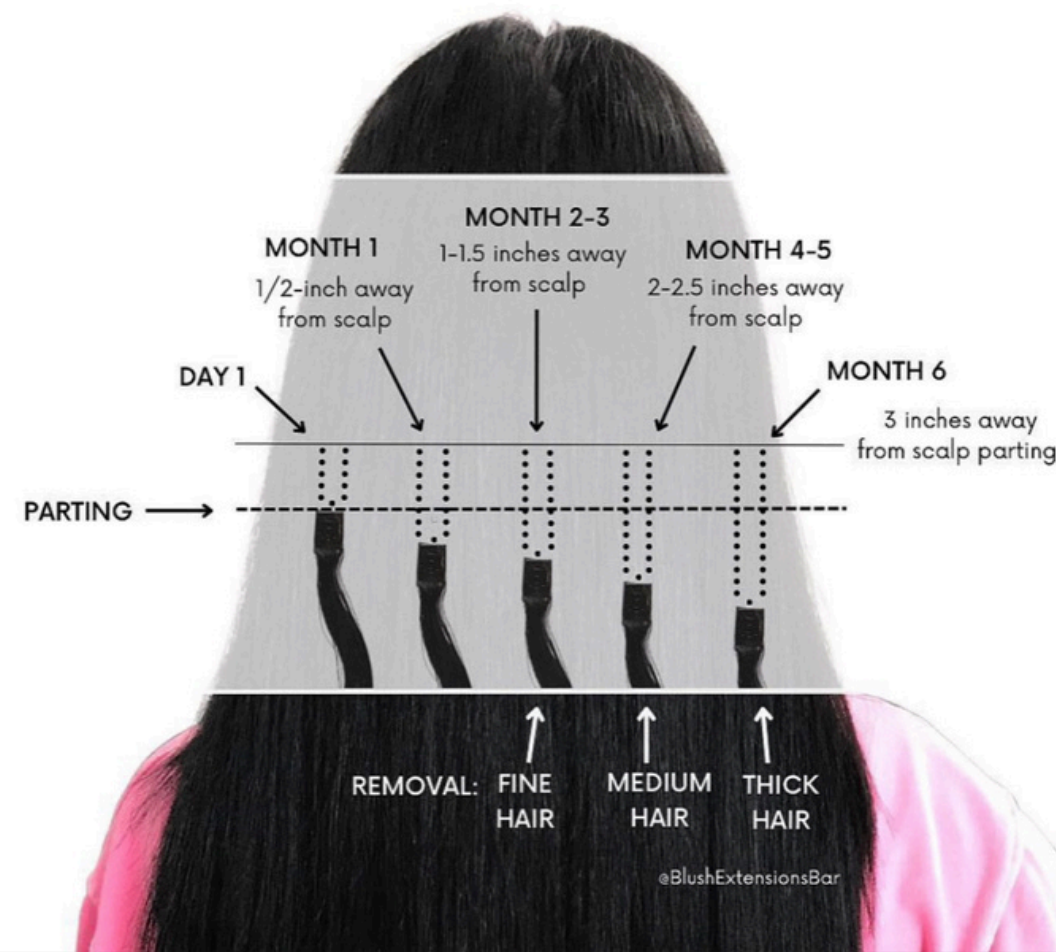




PRICING

There is no maintenance on Keratin Bonds. New Sets are ordered every time. Consultation required for most appointments

K-TIP GROW-OUT



Keratin Bonds

packs (25g)

16" 375\$ per pack

18" 425\$ per pack

20" 450\$ per pack

22" 450\$ per pack

24" 475\$ per pack

26+" custom length are priced by consultation only

*curly textures add 200\$ to total cost

Itips

packs (25g)

16" 350\$ per pack

18" 375\$ per pack

20" 425\$ per pack

22" 450\$ per pack

24" 475\$ per pack

Beaded Row ordering guide



***The average client usually does between 2-3 rows for length and 1-2 rows for thickness**



Beaded Rows

	1 Row	2 Rows	3 Rows
16"	800	1300	1500
20"	950	1500	1700
22"	1050	1700	1900
24"	1200	1900	2200
26"	special order. price at consultations		

Move-ups

*curly hair add 200\$

Reapplication

1 row 200\$

2 rows 375\$

3 rows 425\$

The Decision

Coming in for a color matching consultation I will go over length and color as well as how much hair you will need. Here are some photos of the two method's interior to help you make your decision. Both methods are very manageable and invisible when worn down or in a ponytail. I always use the best quality human hair that is ethically sourced.



THANK YOU

Thank you so much for taking the time to read all of this info. I know that it is a lot but if you are like me, it will all be worth it with your new beautiful hair. If you have any more questions do not be afraid to text or email me. Info on the next seciton!



text or IG message only
@Before Midnight.Hair

971.770.1875
971.770.1875

